



**Inno  
Energy**

**LED Lighting  
Catalog  
2023**

**[InnoEnergy.com.au](http://InnoEnergy.com.au)**

# Inno Energy Group Pty Ltd / PCI Green Technologies Pty Ltd



PCI Green Technologies, a subsidiary of Inno Energy Group, was established in Sydney, Australia in 2019. It offers innovative LED Lighting using thermal resonance heat transfer technology and advanced materials. PCI Green Technologies is a participant in ARENA (Australian Renewable Energy Agency) and a R&D partner of the University of NSW for an ARC project. The result of using our World Leading Technology is higher energy efficiency, brightness, safety, reduced maintenance costs, and longer service life for our LED lights.

# Inno Energy LED Lighting – New Generation of LED Lighting

Based on our new thermal resonance heat transfer technology, Inno Energy has developed a series of highly efficient LED lamps, with the highest energy saving rate, the highest heat dissipation capacity, the lightest weight, the highest light transparency, the least light decay and the longest service life.

Comparison between Inno Energy LED and Traditional Lamps ( For example : 100W for the same Ground Illuminance )

			
Item	Inno Energy Lamp	Traditional LED Lamp	High Voltage Sodium Lamp
Output	80 W	120 W	250 W
Service Life	≥7 Years	2-3 Years	8-18 Months
Weight	3 Kg	5 – 11 Kg	Heavy
Energy Consumption	≥70% less than Sodium lamp ≥20% less than Traditional LED lamp	50% less than Sodium lamp Severe annual light decay	High
Maintenance Cost	Low	High	Very High
Ground Illuminance	>45LX at 12m pole height	>40LX at 12m pole height	>50LX at 12m pole height
Luminous Decay	Annual Light Decay ≈2%	Annual Light Decay ≈10%	Annual Light Decay ≈30%



# Flat Street Lamp

**Application:** Outdoor use

## Product Features

**Light source:** High light efficiency, low light decay.

**Power driver:** Long service life, intelligent type

**Structure:** Built with Super Thermal Resonance Heat Transfer Technology and material, excellent heat dissipation effect, even isotherm .

**Light distribution:** Equal illumination, equal brightness or double light distribution. Intelligent simulation for different road conditions and needs, humanized light distribution design, elimination of dark area and zebra effect.

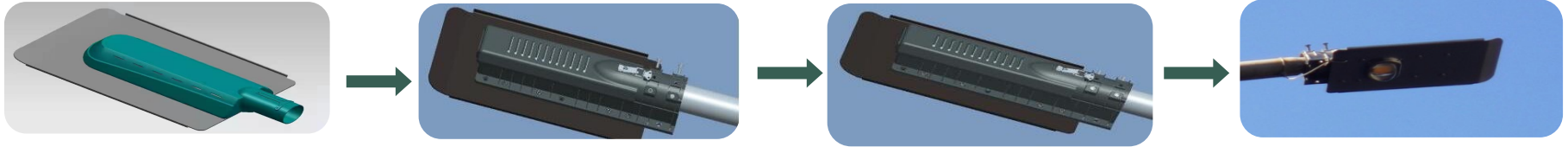


Compatible with all mainstream control methods.

	Product Model	Product Model	Product Model	Product Model	Product Model
<b>Tech Parameter</b>	JML-60	JML-80	JML-100	JML-120	JML-150
<b>Output</b>	60 W	80 W	100 W	120 W	150 W
<b>Dimension</b>	315mm X 210mm X 103mm	570mm X 247mm X 103mm	570mm X 247mm X 103mm	620mm X 320mm X 103mm	620mm X 320mm X 103mm
<b>Weight</b>	2.1 kg	3 kg	3 kg	3.52 kg	3.52 kg
<b>Luminaire Efficacy (4000k )</b>	183 Lm/W	179 Lm/W	174 Lm/W	172 Lm/W	162 Lm/W
<b>Luminous Flux ( 4000k )</b>	10,980 Lm	14,320 Lm	17,400 Lm	20,640 Lm	24,300 Lm
<b>IP Rating</b>	IP 67	IP 67	IP 67	IP 67	IP 67
<b>IK Rating</b>	IK 10	IK 10	IK 10	IK 10	IK 10
<b>Light Source Color Temperature</b>	2200-5500k	2200-5500k	2200-5500k	2200-5500k	2200-5500k
<b>Color Rendering Index</b>	≥70	≥70	≥70	≥70	≥70
<b>Light Source Type</b>	COB	COB	COB	COB	COB
<b>Power Factor</b>	≥0.95@230V/50hz	≥0.95@230V/50hz	≥0.95@230V/50hz	≥0.95@230V/50hz	≥0.95@230V/50hz
<b>Light Decay ( Lumen Maintenance Rate )</b>	50,000 Hours , 87.5%	50,000 Hours , 86.7%	50,000 Hours , 84.6%	50,000 Hours , 84.1%	50,000 Hours , 82.5%
<b>Illuminant Service Life</b>	>100,000 Hours	>100,000 Hours	>100,000 Hours	>100,000 Hours	>90,000 Hours
<b>Voltage</b>	90-277VAC 50/60hz	90-277VAC 50/60hz	90-277VAC 50/60hz	90-277VAC 50/60hz	90-277VAC 50/60hz
<b>Safety Protection</b>	Short Circuit Protection/Over Current Protection/Over Voltage Protection/Over Temperature Protection/ Built-in 5000V Surge Protection Design	Short Circuit Protection/Over Current Protection/Over Voltage Protection/Over Temperature Protection/ Built-in 5000V Surge Protection Design	Short Circuit Protection/Over Current Protection/Over Voltage Protection/Over Temperature Protection/ Built-in 5000V Surge Protection Design	Short Circuit Protection/Over Current Protection/Over Voltage Protection/Over Temperature Protection/ Built-in 5000V Surge Protection Design	Short Circuit Protection/Over Current Protection/Over Voltage Protection/Over Temperature Protection/ Built-in 5000V Surge Protection Design
<b>Ambient Temperature/Humidity</b>	-20°C-50°C / 0-100%	-20°C-50°C / 0-100%	-20°C-50°C / 0-100%	-20°C-50°C / 0-100%	-20°C-50°C / 0-100%
<b>Data Sheet</b>	<a href="#">Link</a>	<a href="#">Link</a>	<a href="#">Link</a>	<a href="#">Link</a>	<a href="#">Link</a>

# Flat Street Lamp

## Installation Method



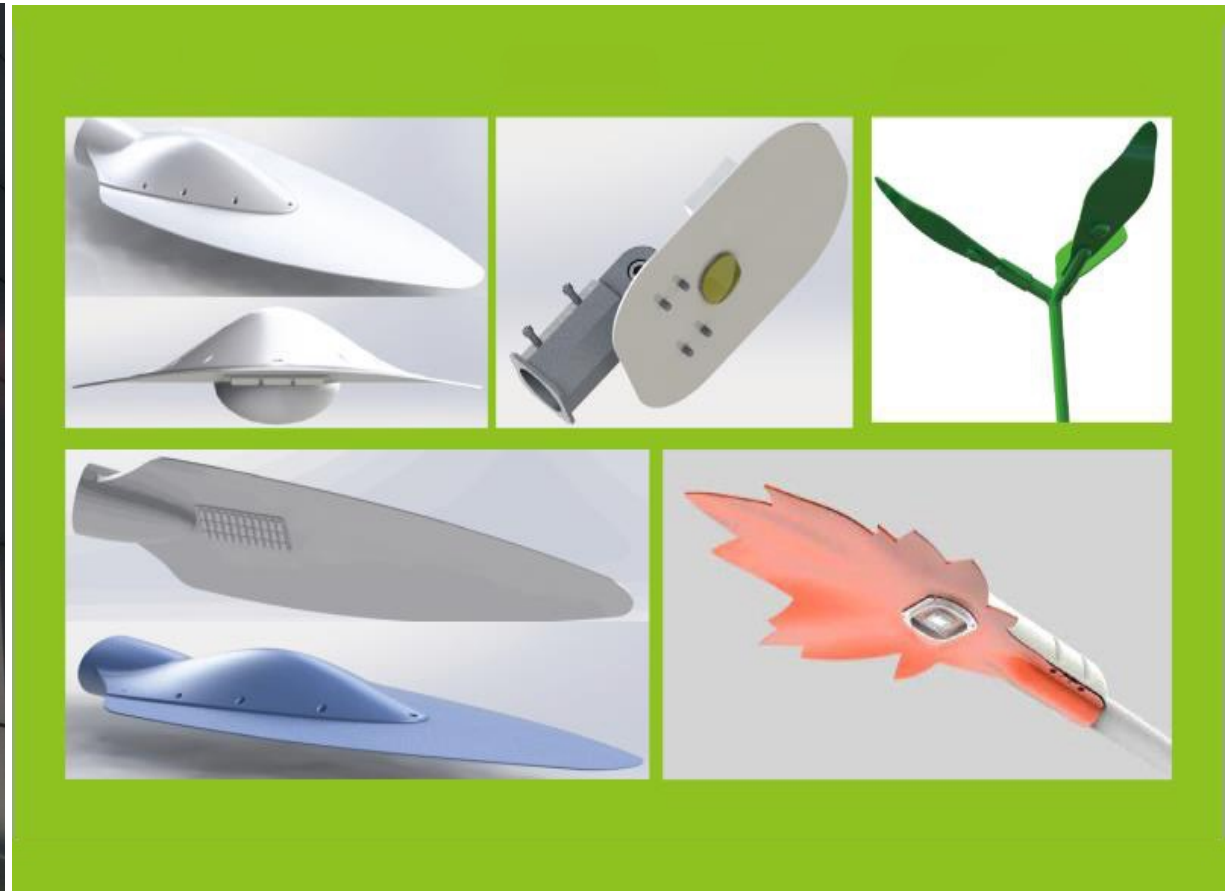
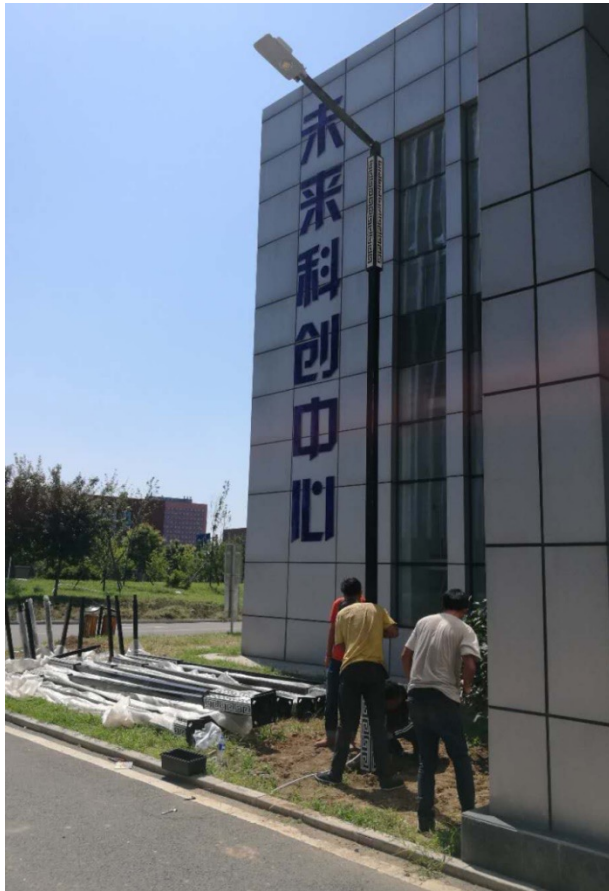
**Remarks** Power supply must be disconnected during installation.  
 Maintenance and installation must be performed by professional personnel.  
 Installation elevation angle: 10-25°  
 For installation, the lighting surface should be placed at a 15° inclined angle with the horizontal surface to avoid uneven light distribution.  
 Shown in the figure below



Serial Number	Maximum Project Area (m <sup>2</sup> )	Weight (kg)
JML-60W**K	0.07	2.1
JML-80W**K	0.11	3.02
JML-100W**K		
JML-120W**K	0.17	3.52
JML-150W**K		

# Flat Street Lamp

Custom Made Street Lamp



# Indoor Stadium And Gymnasium Lighting

**Application:** Indoor Use

## Product Feature

**Light source:** High light efficiency, low light decay

**Power driver:** Long service life, intelligent type

**Structure:** Built with Super Thermal Resonance Heat Transfer Technology and material, excellent heat dissipation effect, even isotherm

**Light distribution:** Equal illumination, equal brightness or double light distribution. Intelligent simulation for different road conditions and needs, humanized light distribution design, elimination of dark area and zebra effect.

Compatible with all mainstream control methods



	Product Model
Tech parameter	JMT-300
Output	300 W
Dimension	470*309*491 mm
Weight	7.2 kg
Luminaire Efficacy ( 4000K )	160 Lm/W
Luminous Flux	48,000 Lm
IP Rating	IP 65
IK Rating	IK 10
Light source color temperature	2200-5500K
Color Rendering Index	≥70
Light source type	COB
Power Factor	≥0.95@230V/50Hz
Light decay ( Lumen Maintenance Rate )	50,000 Hours , 82.5%
Lamp Service Life	>100,000 Hours
Voltage	90-277VAC 50/60Hz
Safety protection	short circuit protection/over current protection/over voltage protection/over temperature protection/ built-in 5000V surge protection design
Ambient Temperature/Humidity	-20°C-50°C / 0-100%

# Indoor Stadium And Gymnasium Lighting

**Application:** Indoor Use

## Product Feature

- Light source:** High light efficiency, low light decay
- Power driver:** Long service life, intelligent type
- Structure:** Built with Super Thermal Resonance Heat Transfer Technology and material, excellent heat dissipation effect, even isotherm
- Light distribution:** Equal illumination, equal brightness or double light distribution. Intelligent simulation for different road conditions and needs, humanized light distribution design, elimination of dark area and zebra effect.
- Compatible with all mainstream control methods**



	Product Model
<b>Tech Parameter</b>	JMT-450
Output	450 W
Dimension	550*550*500 mm
Weight	9.6 kg
Luminaire Efficacy (4000k )	160 Lm/W
Luminous Flux	72,000 Lm
IP Rating	IP 65
IK Rating	IK 10
Light Source Color Temperature	2200-5500K
Color Rendering Index	≥70
Light Source Type	COB
Power Factor	≥0.95@230V/50Hz
Light Decay ( lumen Maintenance Rate )	50,000 Hours , 82.5%
Lamp Service Life	>100,000 Hours
Voltage	90-277VAC 50/60Hz
<b>Safety Protection</b>	Short Circuit Protection/Over Current Protection/Over Voltage Protection/Over Temperature Protection/ Built-in 5000V Surge Protection Design
<b>Ambient Temperature/Humidity</b>	-20°C-50°C / 0-100%



# Indoor Stadium And Gymnasium Lighting

**Application:** Indoor Use

## Product Feature

- Light source:** High light efficiency, low light decay
- Power driver:** Long service life, intelligent type
- Structure:** Built with Super Thermal Resonance Heat Transfer Technology and material, excellent heat dissipation effect, even isotherm
- Light distribution:** Equal illumination, equal brightness or double light distribution. Intelligent simulation for different road conditions and needs, humanized light distribution design, elimination of dark area and zebra effect.

Compatible with all mainstream control methods



	Product Model
Tech Parameter	JMT-600
Output	600 W
Dimension	628*628*491 mm
Weight	13.5 kg
Luminaire Efficacy ( 4000k )	160 Lm/W
Luminous Flux	96,000 Lm
IP Rating	IP 65
IK Rating	IK 10
Light Source Color Temperature	2200-5500k
Color Rendering Index	≥70
Light Source Type	COB
Power Factor	≥0.95@230V/50hz
Light Decay ( lumen Maintenance Rate )	50,000 Hours , 82.5%
Lamp Service Life	>100,000 Hours
Voltage	90-277VAC 50/60hz
Safety Protection	Short Circuit Protection/Over Current Protection/Over Voltage Protection/Over Temperature Protection/ Built-in 5000V Surge Protection Design
Ambient Temperature/Humidity	-20°C-50°C / 0-100%

# Indoor Stadium And Gymnasium Lighting

Illustration



# Tennis Court Lamp

**Application:** Outdoor Use

## Product Features

- Light source:** High light efficiency, low light decay
- Power driver:** Long service life, intelligent type
- Structure:** Built with Super Thermal Resonance Heat Transfer Technology and material, excellent heat dissipation effect, even isotherm
- Light distribution:** Equal illumination, equal brightness or double light distribution. Intelligent simulation for different road conditions and needs, humanized light distribution design, elimination of dark area and zebra effect.
- Compatible with all mainstream control methods



Product Model	
Tech Parameter	JMT-600
Output	200 W, 400 W, 600 W
Dimension	591*186*246 mm
Weight	20 kg
Luminaire Efficacy ( 4000k )	140 Lm/W
Luminous Flux	28,000 Lm , 56,000 Lm , 84,000 Lm
IP Rating	IP 66
IK Rating	IK 10
Light Source Color Temperature	2200-6000k
Color Rendering Index	≥70
Light Source Type	COB
Power Factor	≥0.95@230V/50hz
Light Decay ( lumen Maintenance Rate )	50,000 Hours , 87.5%
Lamp Service Life	>100,000 Hours
Voltage	90-277VAC 50/60hz
Safety Protection	Short Circuit Protection/Over Current Protection/Over Voltage Protection/Over Temperature Protection/ Built-in 5000V Surge Protection Design
Ambient Temperature/Humidity	-20°C-50°C / 0-100%

# Tennis Court Lamp

## Illustration



# Flood Light

**Application:** Airport, square high pole lights, container yard, highway toll station, gantry crane, exhibition, etc

## Product Feature

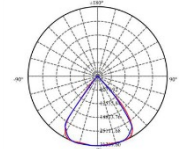
**Light source:** High light efficiency, low light decay

**Power driver:** Long service life, intelligent type

**Structure:** Built with Super Thermal Resonance Heat Transfer Technology and material, excellent heat dissipation effect, even isotherm

**Light distribution:** Equal illumination, equal brightness or double light distribution. Intelligent simulation for different road conditions and needs, humanized light distribution design, elimination of dark area and zebra effect.

Compatible with all mainstream control methods



	Product Model
Tech Parameter	JMG-120
Output	100W , 120W
Dimension	200*280*110 mm
Weight	3.1 kg
Luminaire Efficacy ( 4000k )	160 Lm/W
Luminous Flux	≥16,000 Lm
IP Rating	IP 67
IK Rating	IK 10
Light Source Color Temperature	2200-5500K
Color Rendering Index	≥65
Light Source Type	COB
Power Factor	≥0.95@230V/50Hz
Light Decay ( lumen Maintenance Rate )	50,000Hours , 87.5%
Lamp Service Life	>100,000 Hours
Voltage	90-277VAC 50/60Hz
Safety Protection	Short Circuit Protection/Over Current Protection/Over Voltage Protection/Over Temperature Protection/ Built-in 5000V Surge Protection Design
Ambient Temperature/Humidity	-20°C-50°C/0-100%



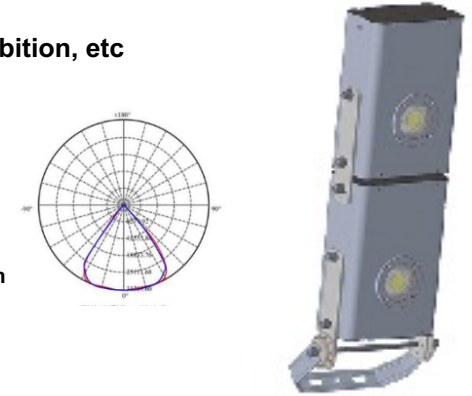
# Flood Light

**Application:** Airport, square high pole lights, container yard, highway toll station, gantry crane, exhibition, etc

## Product Feature

- Light source:** High light efficiency, low light decay
- Power driver:** Long service life, intelligent type
- Structure:** Built with PCI heat dissipation technology and material, excellent heat dissipation effect, even isotherm
- Light distribution:** Equal illumination, equal brightness or double light distribution. Intelligent simulation for different road conditions and needs, humanized light distribution design, elimination of dark area and zebra effect.

Compatible with all mainstream control methods



	Product Model
Tech Parameter	JMG-240
Output	200W , 240W
Dimension	200*570*110 mm
Weight	≈7 kg
Luminaire Efficacy ( 4000k )	160 Lm/W
Luminous Flux	≥32,000 Lm
IP Rating	IP 65
IK Rating	IK 10
Light Source Color Temperature	2200-5500K
Color Rendering Index	≥65
Light Source Type	COB
Power Factor	≥0.95@230V/50Hz
Light Decay ( lumen Maintenance Rate )	50,000 Hours , 87.5%
Lamp Service Life	>100,000 Hours
Voltage	90-277VAC 50/60Hz
Safety Protection	Short Circuit Protection/Over Current Protection/Over Voltage Protection/Over Temperature Protection/ Built-in 5000V Surge Protection Design
Ambient Temperature/Humidity	-20°C-50°C / 0-100%

# Flood Light / High-Pole Lamp

**Application:** Airport, square high pole lights, container yard, highway toll station, gantry crane, exhibition, etc

## Product Feature

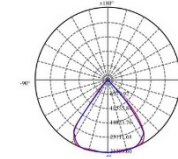
**Light source:** High light efficiency, low light decay

**Power driver:** Long service life, intelligent type

**Structure:** Built with Super Thermal Resonance Heat Transfer Technology and material, excellent heat dissipation effect, even isotherm

**Light distribution:** Equal illumination, equal brightness or double light distribution. Intelligent simulation for different road conditions and needs, humanized light distribution design, elimination of dark area and zebra effect.

Compatible with all mainstream control methods



Product Model	
Tech Parameter	JMG-300
Output	300W , 320W , 350W , 400W
Dimension	670*420*240 mm
Weight	13 kg
Luminaire Efficacy ( 4000k )	140 Km/W
Luminous Flux	≥54,000 Lm
IP Rating	IP 67
IK Rating	IK 10
Light Source Color Temperature	2200-5500K
Color Rendering Index	≥65
Light Source Type	COB
Power Factor	≥0.95@230V/50Hz
Light Decay ( Lumen Maintenance Rate )	50,000 Hours , 87.5%
Lamp Service Life	>100,000 Hours
Voltage	90-277VAC 50/60Hz
Safety Protection	Short Circuit Protection/Over Current Protection/Over Voltage Protection/Over Temperature Protection/ Built-in 5000V Surge Protection Design
Ambient Temperature/Humidity	-20°C-50°C / 0-100%

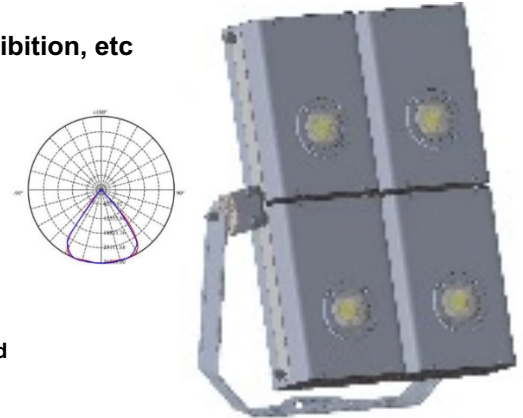
# Flood Light / High-Pole Lamp

**Application:** Airport, square high pole lights, container yard, highway toll station, gantry crane, exhibition, etc

## Product Feature

- Light source:** High light efficiency, low light decay
- Power driver:** Long service life, intelligent type
- Structure:** Built with Super Thermal Resonance Heat Transfer Technology and material, excellent heat dissipation effect, even isotherm
- Light distribution:** Equal illumination, equal brightness or double light distribution. Intelligent simulation for different road conditions and needs, humanized light distribution design, elimination of dark area and zebra effect.

Compatible with all mainstream control methods



	Product Model
Tech Parameter	JMG-400
Output	400W , 480W
Dimension	410*570*110 mm
Weight	15 kg
Luminaire Efficacy ( 4000k )	160 Lm/W
Luminous Flux	≥64,000 Lm
IP Rating	IP 65
IK Rating	IK 10
Light Source Color Temperature	2200-5500K
Color Rendering Index	≥65
Light Source Type	COB
Power Factor	≥0.95@230V/50Hz
Light Decay ( Lumen Maintenance Rate )	50000 Hours , 87.5%
Lamp Service Life	>100000 Hours
Voltage	90-277VAC 50/60Hz
Safety Protection	Short Circuit Protection/Over Current Protection/Over Voltage Protection/Over Temperature Protection/ Built-in 5000V Surge Protection Design
Ambient Temperature/Humidity	-20°C-50°C / 0-100%

# Flood Light / High-Pole Lamp

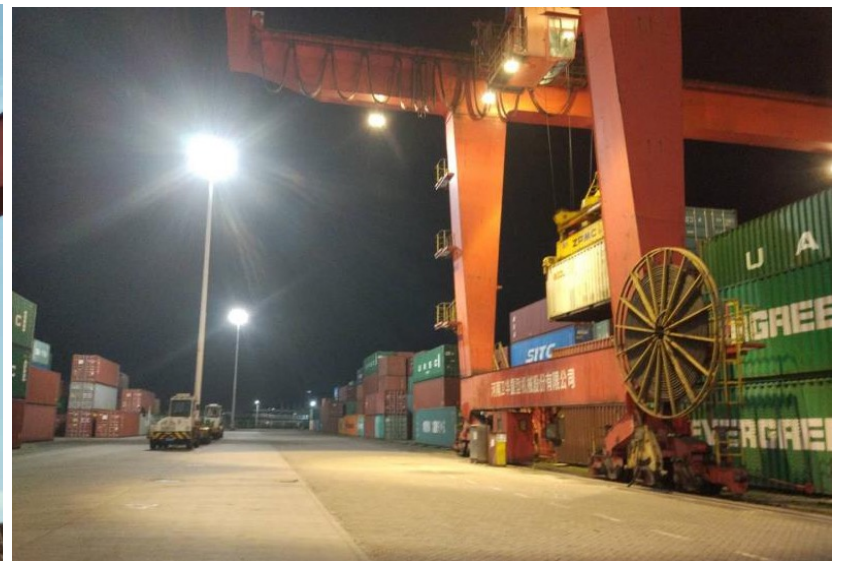
## Illustration





# Flood Light / High-Pole Lamp

## Illustration



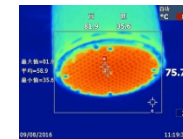
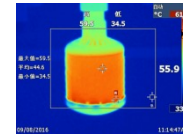
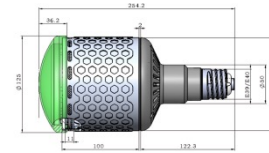


# E40 Industrial And Mining Lamp

**Applications:** Factory ,warehouse, loading yard, marketplace

## Product Features

- Light source:** High light efficiency, low light decay.
- Power driver:** Long service life, intelligent type
- Structure:** Built with Super Thermal Resonance Heat Transfer Technology , excellent heat dissipation effect, even isotherm
- Light distribution:** Equal illumination, equal brightness or double light distribution. Intelligent simulation for different road conditions and needs, humanized light distribution design, elimination of dark area and zebra effect.
- Compatible with all mainstream control methods**



	Product Model
Tech parameter	JM-E40
Output	50W , 100W
Dimension	Diameter 125mm*254 mm
Weight	0.89 kg
Luminaire Efficacy ( 4000K )	120 Lm/W
Luminous Flux	6000 Lm,12000 Lm
IP Rating	IP 62
IK Rating	IK 07
Light source color temperature	2200-5500K
Color Rendering Index	≥70
Light source type	COB
Power factor	≥0.95@230V/50Hz
Light decay ( Lumen Maintenance Rate )	50,000 Hours , 87.5%
Lamp service life	88,000 Hours
Voltage	90-277VAC 50/60Hz
Safety protection	Short Circuit Protection/Over Current Protection/Over Voltage Protection/Over Temperature Protection/ Built-in 5000V Surge Protection Design
Ambient Temperature/Humidity	-20°C-50°C / 0-100%

# E40 Industrial And Mining Lamp

## Illustration

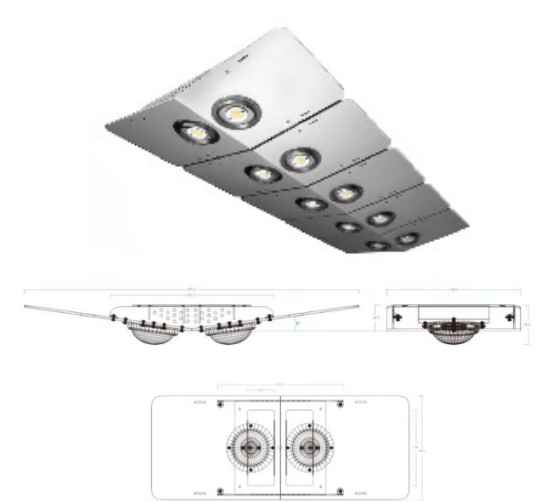


# Tunnel Light

**Applications:** Tunnels, factory, warehouse, marketplace

## Product Features

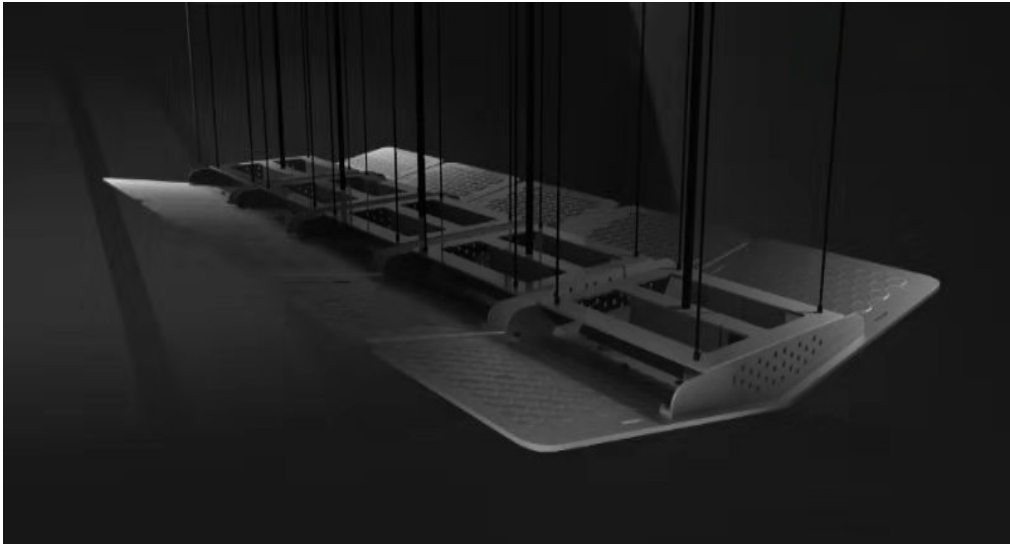
- Light source:** High light efficiency, low light decay
- Power driver:** Long service life, intelligent type
- Structure:** Built with Super Thermal Resonance Heat Transfer Technology and material, excellent heat dissipation effect, even isotherm
- Light distribution:** Equal illumination, equal brightness or double light distribution. Intelligent simulation for different road conditions and needs, humanized light distribution design, elimination of dark area and zebra effect.
- Compatible with all mainstream control methods**



	Product Model
Tech parameter	JMS-200
Output	60 W-200 W
Dimension	465*150 mm
Weight	≈3kg
Luminaire Efficacy ( 4000K )	180 Lm/W
Luminous Flux	
IP Rating	IP 67
IK Rating	IK 10
Light source color temperature	2200-5500K
Color Rendering Index	≥65
Light source type	COB
Power factor	≥0.95@230V/50Hz
Light decay ( Lumen Maintenance Rate )	50,000 Hours , 87.5%
Lamp service life	>100,000 Hours
Voltage	90-277VAC 50/60Hz
Safety protection	Short Circuit Protection/Over Current Protection/Over Voltage Protection/Over Temperature Protection/ Built-in 5000V Surge Protection Design
Ambient Temperature/Humidity	-20°C-50°C / 0-100%

# Tunnel Light

## Illustrations



# Dock, Harbour Light

**Applications:** Dock, Harbour, Loading yard

## Product Features

**Light source:** High light efficiency, low light decay.

**Power driver:** Long service life, intelligent type

**Structure:** Built with Super Thermal Resonance Heat Transfer Technology and material, excellent heat dissipation effect, even isotherm .

**Light distribution:** Equal illumination, equal brightness or double light distribution. Intelligent simulation for different road conditions and needs, humanized light distribution design, elimination of dark area and zebra effect.

Compatible with all mainstream control methods.



	Product Model
Tech parameter	JMM-200
Output	200 W
Weight	10 kg
Luminaire Efficacy ( 4000K )	130 Lm/W
Luminous Flux	26,000 Lm
IP Rating	IP 66
IK Rating	IK 10
Light source color temperature	2200-5500K
Color Rendering Index	≥65
Light source type	COB
Power factor	≥0.95@230V/50Hz
Light decay ( Lumen Maintenance Rate )	50,000 Hours , 87.5%
Lamp service life	>100,000 Hours
Voltage	90-277VAC 50/60Hz
Safety protection	Short Circuit Protection/Over Current Protection/Over Voltage Protection/Over Temperature Protection/ Built-in 5000V Surge Protection Design
Ambient Temperature/Humidity	-20°C-50°C / 0-100%



# Dock, Harbour Light

Illustration



# Project Illustration



High Pole Lamp



Street Lamp



Street Lamp



Street Lamp



Street Lamp



Street Lamp



Street Lamp



Campus Lamp/Remote Control



Street Lamp



Street Lamp



# Project Illustration



Street Lamp



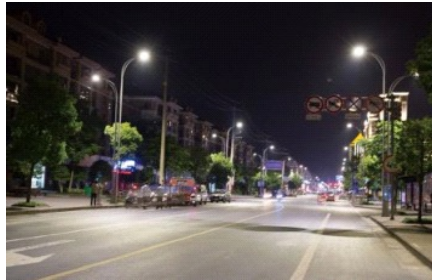
Street Lamp



Harbour Loading Dock



Harbour Loading Yard



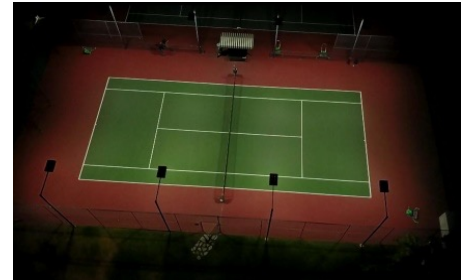
Street Lamp



Street Lamp



Harbour Loading Dock



Tennis Court Lamp



Harbour Lamp



Street Lamp



Airport Lamp



Harbour Lamp



**Inno  
Energy**

**Building a  
Greener  
Tomorrow.**

**[InnoEnergy.com.au](http://InnoEnergy.com.au)**

